



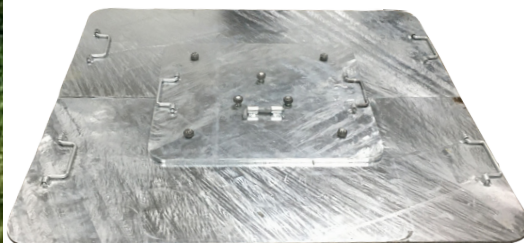
RISE & SHINE

# Modular mast with solar lamp and accessories.

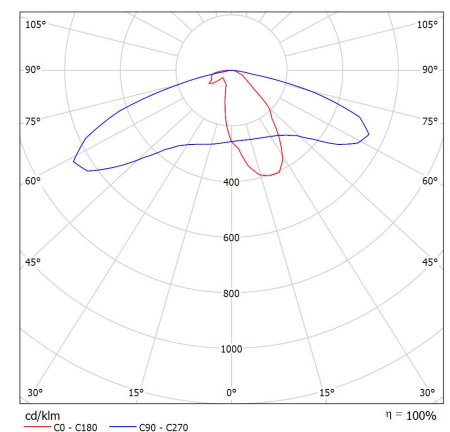
## Product data for Cobra VI & V2:

- The mast is a glass fibre construction.
- The threaded joints are made of electrically galvanised steel.
- The mounting point for the lamp unit at the top of the mast is also made of electrically galvanised steel.
- The base plate is made of heat galvanised steel.
- The ground skewer is made of heat galvanised steel.
- Ncage NATO number R9246

**The 5 mast modules screw together to form a 5 m tall mast. The mast and baseplate should then be tilted onto the ground skewer top plate. The mast should then be secured to the ground skewer with screws.**



Luminous emittance 1:





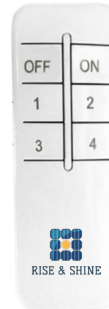
RISE & SHINE

# Solar and LED lamp unit

All the lamp's internal and external nuts, bolts and washers are made of A4/316 stainless steel.

## 20 watt solar & LED lamp unit

- Led 20 watt
- Solar panel 40 watt Monocrystalline
- Battery 280WH LifePo4
- Lumen 4500
- Kelvin 5000
- ip65
- Battery recharge time 7 hours
- Materials – Aluminium, Polycarbonate, A4 steel
- Operating temp -15°C to +70°C
- External dimensions L 460 mm – W 405 mm – H 80 mm
- Weight 15 kg
- Illuminated area 20x10 m when mounted to 5 m mast
- Remote control with four light settings



## Remote operation

Turn the lamp on and off by the remote control. The remote controls four lamp operating settings:

1. 50% lamp power, from sunset to sunrise, no PIR.
2. 100% lamp power, from sunset to sunrise, no PIR.
3. 100% lamp power for 15 minutes, turns on via PIR/motion sensor. The lamp will turn off again after 15 minutes if sensor detects no motion.
4. 100% lamp power for the first 8 hours after sunset, then 50% lamp power until sunrise, no PIR.

The remote runs on 2 AAA batteries. Range of up to 9 m from the lamp. (PIR = motion sensor)

## Extra option: Upgrade to Cobra V2

Integrated extra AC and DC power supply

- Includes upgrade to the lamp unit and its electronic componentry
- Various plugs, sockets and cables ip67
- Power transformer at base of the mast ip67
- Can then be charged with an ordinary AC 100V-240V ~ DC battery
- Or a DC 12V to 24V ~ DC battery
- AC recharge time 3 hours
- DC recharge time 4 hours



AC and DC plug at the base of the mast.

## Complete programme: COBRA VI & V2

Overview of individual Cobra VI and V2 components:

- Transport box on EU pallet, heat treated
- External transport box dimensions: L 1200 x W 800 x H 925 mm
- Internal packaging materials incl. secure transport
- Various tools
- Ground skewer for mast installation
- 5 m glass fibre mast, screw assembly
- Total weight of complete product: 115 kg
- 20 watt LED and Solar lamp unit
- Storage bags for lamp unit and tools
- The Cobra V2 version also comes with an AC/DC transformer



All componentry is delivered in a heat-treated OSB transport box made by Clip-Lok. The box can be dismantled entirely or as sections to facilitate unpacking the product.



Quality tools are included for installation and disassembly.